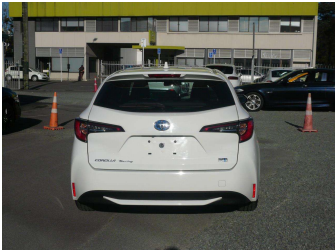
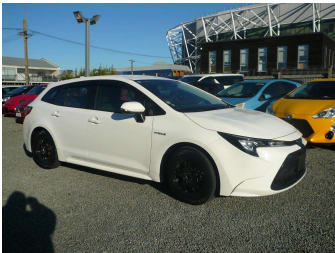
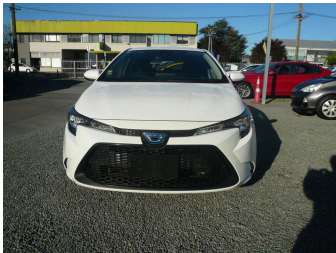


2020 Toyota COROLLA wagon 1800cc hybrid airbags



Purchase Price

Includes GST
Excludes on-road costs of \$650

\$22,990

Indicative repayments

\$144.10 per week*

Based on a 48 month term & no deposit.
Total repayments (208) = **\$29,973.68**

MARAC

Gain peace of mind with
Mechanical Breakdown
Insurance. **Ask us how.**



Top features

- » 4 cylinder
- » Passenger airbag
- » ABS brakes
- » Power steering
- » Air Conditioning
- » Power Steering
- » Central locking
- » Power Window
- » Central Locking
- » Rear Wiper
- » Child seat anchor poin...
- » Reverse Camera
- » Driver airbag
- » Electric Mirrors
- » Electric Mirrors (Retr...

Body Style

5 door, Hatchback

Reg No.

-

Odometer

84,000 km

Ext Colour

White

Engine

1790 cc, Hybrid

History

Ex-Overseas

Fuel Type

Petrol

Seats

5 seats, Delux Cloth

Transmission

automatic, Front Wheel

CO2 Emissions

★★★★☆

Wheels

16", Hubcap

80 grams/km

VIN

7AT0H607X25018561

Energy Economy

★★★★☆

Interior

Black, Cloth

**Annual fuel cost of \$1,330
3.4L per 100km**

Safety



Based on 2024 VSRR rating

Cost per year is an estimate based on petrol price of \$2.80 per litre and an average distance of 14000 km. Emissions and Energy Economy figures standardised to 3P WLTP.

Stock ID: 5537



Toys on Wheels | Phone 03 371 7227 | Email sales@toysonwheels.co.nz
203 Lichfield Street, City Centre, Christchurch 8011, New Zealand
www.toysonwheels.co.nz

* Toys on Wheels is not a lender nor a financial adviser. Any amounts displayed should not be seen as an offer of finance or taken as financial advice. The interest rate, fees and loan term used in this calculation may not actually represent those available from lenders. Actual interest rates, fees and loan terms will vary per lender and are typically based on an assessment of your credit risk and responsible lending criteria. Any repayment amounts displayed are indicative only and have been calculated using several other indicative inputs. The interest rate used in this calculation is an arbitrary 10.95%, however exact interest rates vary per lender. The term of the loan used in this calculation is 48 month. Exact terms available vary per lender although options typically include 6, 12, 18, 24, 36, 48 and 60 months. This calculation also includes two typical mandatory fees charged by lenders. These are an account admin fee of \$5.00 per month (other payment frequencies may be available) and a one-off establishment fee of \$350.00. Typically, this fee can be paid upfront or, as in this calculation, be capitalised over the contract term, ie. included in the loan amount. These fees can vary per lender and other non-mandatory fees and charges may also apply. The total amount of repayments has been calculated by multiplying 208 weekly repayments (based on a 48 month term) by the weekly repayment amount of \$144.10 which equals \$29,973.68. This calculator does not consider any of your own personal circumstances and we strongly suggest you seek budgeting advice prior to committing to any loan contract. Responsible lending criteria and lender terms and conditions will likely apply to any finalised loan contract. Proof of security and/or vehicle insurance may also be required before proceeding.