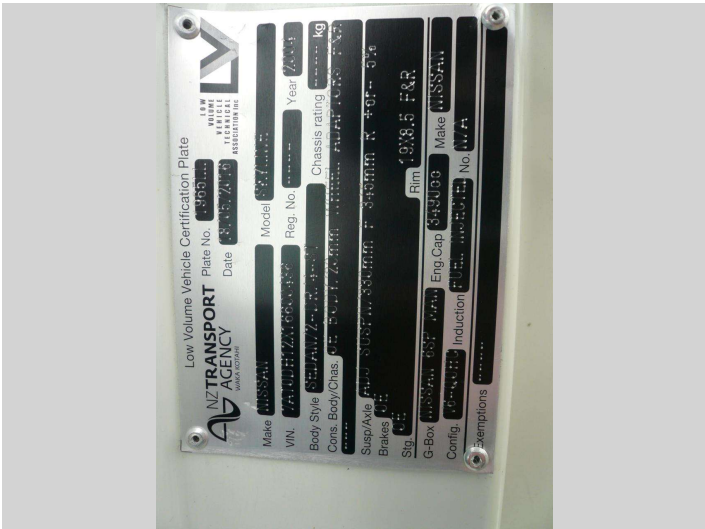


2004 Nissan Skyline 6 speed 3500 v6 alloys airbags



Purchase Price

Includes GST, Registration & Licensing

\$14,990

Indicative repayments

\$92.56

per week*

Based on a 48 month term & no deposit.
Total repayments (208) = \$19,252.7

MARAC

Gain peace of mind with
Mechanical Breakdown
Insurance. Ask us how.

Top features

» 24 Valve

» 6 cylinder

» ABS brakes

» Adjustable Suspension

» Air Conditioning

» Alarm

» Body Kit (Factory)

» Car Alarm

» Central locking

» Central Locking

» Climate Control

» CRUISE CONTROL

» Digital Display

» Electric Mirrors (Retr...

» heated seats

» Heated Seats

» Passenger airbag

» Power steering

Body Style

2 door, Coupe

Reg No.

JT6828

Odometer

80,000 km

Engine

3500 cc, 3500cc V6

Fuel Type

Petrol

Transmission

6-Speed Manual, Rear Wheel

Wheels

19", Factory Alloys

VIN

7AT0DH12X16600436

Interior

Black, half leather

Safety

2 star safety rating

Based on 2024 VSRR rating

History

Ex-Overseas, 2 owners

Seats

4 seats, half leather

CO2 Emissions

★☆☆☆☆282 grams/km

Energy Economy

★☆☆☆☆Annual fuel cost of \$4,630
11.8L per 100km

Cost per year is an estimate based on petrol price of \$2.80 per litre and an average distance of 14000 km. Emissions and Energy Economy figures standardised to 3P WLTP.

Stock ID: 5665



Toys on Wheels | Phone 027 213 7777 | Email sales@toysonwheels.co.nz
97 Main South Road, Sockburn, Christchurch 8042, New Zealand
www.toysonwheels.co.nz

* Toys on Wheels is not a lender nor a financial adviser. Any amounts displayed should not be seen as an offer of finance or taken as financial advice. The interest rate, fees and loan term used in this calculation may not actually represent those available from lenders. Actual interest rates, fees and loan terms will vary per lender and are typically based on an assessment of your credit risk and responsible lending criteria. Any repayment amounts displayed are indicative only and have been calculated using several other indicative inputs. The interest rate used in this calculation is an arbitrary 10.95%, however exact interest rates vary per lender. The term of the loan used in this calculation is 48 month. Exact terms available vary per lender although options typically include 6, 12, 18, 24, 36, 48 and 60 months. This calculation also includes two typical mandatory fees charged by lenders. These are an account admin fee of \$5.00 per month (other payment frequencies may be available) and a one-off establishment fee of \$350.00. Typically, this fee can be paid upfront or, as in this calculation, be capitalised over the contract term, ie. included in the loan amount. These fees can vary per lender and other non-mandatory fees and charges may also apply. The total amount of repayments has been calculated by multiplying 208 weekly repayments (based on a 48 month term) by the weekly repayment amount of \$92.56 which equals \$19,252.70. This calculator does not consider any of your own personal circumstances and we strongly suggest you seek budgeting advice prior to committing to any loan contract. Responsible lending criteria and lender terms and conditions will likely apply to any finalised loan contract. Proof of security and/or vehicle insurance may also be required before proceeding.